



2012

solutions catalog



Labeling Solutions America, Inc.

Table of Contents

Simply SATO

Simply SATO Thermal Imprint Clip-On Hang Tag	2
Simply SATO Hang Tags	2
Simply SATO Continuous Basket Thermal Hang Tags	3
Simply SATO Solutions	3

Thermal Products

Thermal Printers	6
Thermal Accessories	7
Thermal Transfer Ribbon	7
Labeling Software	8
Thermal Slip-On® Tags	9
Thermal Pot Tags	10-11
Thermal Hang Tags	12
Thermal Signs	13
Thermal Pressure Sensitive Labels	14-15
Thermal Pressure Sensitive Paper Labels	16
Preprinted Tags and Labels	17

Laser Products

Color Laser Slip-On® Tags	18
Color Laser Printable Hang Tags	19
Color Laser Printable Pot Tags	20
Color Laser Printable Signs	20
Color Laser Pressure Sensitive Labels	21

Retail Garden Center Products/Grower Supplies





Custom Signs	22
Blank Signs	22
Stock Signs	23
Sign Holders	24
T-Stakes	25
Injection Molded Stakes	25
Blackboard Markers	25
Pens	26
Sold Tags	26
Impress-O-Tags	27
ID Tags and Ties	27
Tag Guns and Accessories	27

Custom Printing

Custom Printing Section	28-32
Tree Wraps	32

Legend

Please locate your printer model. The corresponding icon will indicate which product can be used in your printer.

-  Prints up to 4" or 5" on a 5" web (material width).
TEC472M • TEC572M • TECSX4M • TECSX5M
-  CG408 Printer
-  Prints up to 4" or 5" on a 9" web (material width).
TXP3-4 • TXP3-5 • TXPSX5 • TXPSX4
-  Fits most SATO and Zebra printers. Print width may vary.

Valueline Laser Slip-On® Tags Laser Material (VL) 10 mil

The Valueline Laser printable product is a 10 mil material that is top coated on both sides to provide superior imaging and longevity outdoors. Our Valueline is viable for all of your monochrome laser printing applications, but is also a solution to most of your color printing applications as well. This economically priced laser printable material can cover almost all of your laser printing needs. Our laser Slip-On® tags may be preprinted with information such as company name, website and logo for maximizing company visibility.



VLX1085SWH



VLX1081SWH



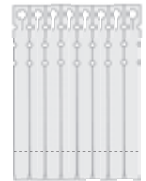
VLT1081SWH
With 1-3/4" Tear-off



VLX1011SWH



VLT1011SWH
With 1-3/4" Tear-off



Item No.	Size	Tags per Sheet	Type of Preprint	Qty Pack/Case	Weight/Case	1M	5M	10M	20M	50M
WH VLX1085SWH	1/2 X 8 1/2	20	F	1M / 15M	28 LB	\$37.30	\$31.74	\$29.78	\$27.97	\$26.16
VLX1081SWH	1 X 8-1/2	10	F	1M / 10M	27 LB	\$49.96	\$42.51	\$39.89	\$37.46	\$35.03
VLT1081SWH	1 X 8-1/2 w/ 1 3/4" tear-off	10	F	1M / 10M	27 LB	\$49.96	\$42.51	\$39.89	\$37.46	\$35.03
VLX1011SWH	1 X 11	8	F	1M / 8M	28 LB	\$60.44	\$51.43	\$48.25	\$45.32	\$42.38
VLT1011SWH	1 X 11 w/ 1 3/4" tear-off	8	F	1M / 8M	28 LB	\$60.44	\$51.43	\$48.25	\$45.32	\$42.38

Minimum: 1,000 tags per artwork change. Setup and printing charges may apply -- See page 5 for more information or call your local reseller for quote.

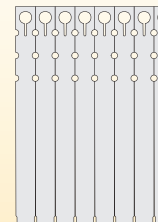
Note: Due to the number of laser printers on the market, customers are requested to order a free sample packet to thoroughly test the printer they are considering using.

Superior Advantage Laser Printable Slip-On® Tags Laser Material (CL) 7 mil

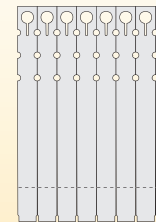
The Superior Advantage Laser printable product is a 7 mil material that is top coated on both sides to provide superior imaging and longevity outdoors. Our Superior Advantage gives excellent resolution in color printing applications. It will provide a solution to all of your color laser printing needs. Our laser Slip-On® tags may be preprinted with information such as company name, website and logo for maximizing company visibility.



CLX1011SWH



CLT1011SWH
With 1-3/4" Tear-off



Item No.	Size	Tags per Sheet	Type of Preprint	Qty Pack/Case	Weight/Case	1M	5M	10M	20M	50M
WH CLX1011SWH	1 X 11	8	F	1M / 5M	24 LB	\$93.47	\$79.54	\$74.63	\$70.09	\$65.55
CLT1011SWH	1 X 11 w/ 1 3/4" tear-off	8	F	1M / 5M	24 LB	\$93.47	\$79.54	\$74.63	\$70.09	\$65.55

Minimum: 1,000 tags per artwork change. Setup and printing charges may apply -- See page 5 for more information or call your local reseller for quote.

Note: Due to the number of laser printers on the market, customers are requested to order a free sample packet to thoroughly test the printer they are considering using.

Valueline Laser Printable Hang Tags Laser Material (VL) 10 mil

10 mil material that is top coated on both sides to provide superior imaging and longevity outdoors. Our Valueline is viable for all of your monochrome laser printing applications, but is also a solution to most of your color printing applications as well. This economically priced laser printable material can cover almost all of your laser printing needs. Our laser printable hang tags are available with preprinted care instruction or blank. They also can be custom printed flexographically up to three colors.



Item No.	Size	Tags per Sheet	Type of Preprint	Qty Pack/Case	Weight/Case	1M	5M	10M	20M	50M
WH										
VLH2242SWH (8.5"x11")	2.2 X 4.25	10	F	1M / 5M	18 LB	\$42.17	\$35.89	\$33.67	\$31.62	\$29.58
VLH2242SWHP* (8.5"x11")	2.2 X 4.25	10	F	1M / 5M	18 LB	\$49.36	\$42.00	\$39.41	\$37.01	\$34.61
VLH2842SWH (8.5"x14")	2.8 X 4.25	10	F	1M / 5M	24 LB	\$51.03	\$43.42	\$40.74	\$38.26	\$35.78
VLH2842SWHP* (8.5"x14")	2.8 X 4.25	10	F	1M / 5M	24 LB	\$58.63	\$49.89	\$46.81	\$43.96	\$41.12
VLH2755SWH (8.5"x11")	2.8125 X 5.5	6	F	1M / 5M	30 LB	\$63.85	\$54.33	\$50.98	\$47.87	\$44.77
VLH2755SWHP* (8.5"x11")	2.8125 X 5.5	6	F	1M / 5M	30 LB	\$72.07	\$61.33	\$57.54	\$54.04	\$50.54

*Preprinted with generic care instructions

Setup and printing charges may apply -- See page 5 for more information or call your local reseller for quote.

Note: Due to the number of laser printers on the market, customers are requested to order a free sample packet to thoroughly test the printer they are considering using.

Superior Advantage Laser Printable Hang Tags Laser Material (CL) 7 mil

The Superior Advantage Laser printable product is a 7 mil material that is top coated on both sides to provide superior imaging and longevity outdoors. Our Superior Advantage gives excellent resolution in color printing applications. It will provide a solution to all of your color laser printing needs. Our laser printable hang tags are available with preprinted care instruction or blank. They also can be custom printed flexographically up to three colors.



Item No.	Size	Tags per Sheet	Type of Preprint	Qty Pack/Case	Weight/Case	1M	5M	10M	20M	50M
WH										
CLH2242SWH (8.5"x11")	2.2 X 4.25	10	F	1M / 5M	20 LB	\$75.50	\$64.24	\$60.28	\$56.61	\$52.94
CLH2242SWHP* (8.5"x11")	2.2 X 4.25	10	F	1M / 5M	20 LB	\$88.63	\$75.42	\$70.76	\$66.46	\$62.15
CLH2842SWH (8.5"x14")	2.8 X 4.25	10	F	1M / 5M	25 LB	\$94.37	\$80.31	\$75.35	\$70.76	\$66.18
CLH2842SWHP* (8.5"x14")	2.8 X 4.25	10	F	1M / 5M	25 LB	\$112.42	\$95.67	\$89.76	\$84.30	\$78.84
CLH2755SWH (8.5"x11")	2.8125 X 5.5	6	F	1M / 5M	32 LB	\$121.46	\$103.36	\$96.97	\$91.07	\$85.17
CLH2755SWHP* (8.5"x11")	2.8125 X 5.5	6	F	1M / 5M	32 LB	\$141.57	\$120.47	\$113.03	\$106.15	\$99.28

*Preprinted with generic care instructions

Setup and printing charges may apply -- See page 5 for more information or call your local reseller for quote.

Note: Due to the number of laser printers on the market, customers are requested to order a free sample packet to thoroughly test the printer they are considering using.

Laser Printable Signs and Pot Tags

The material is top coated on both sides to provide superior imaging and longevity outdoors. The same material used for Laser Slip-On® is available as sign stock in sizes up to 8-1/2 x 11 and may be printed with decorative frames, borders, logos, etc. Variable information can be printed with the laser printer. TAGGIT PRO™ Label Software program now supports laser printers. Utilize your database and print barcodes with confidence. Sold in packages of 100 only! Laser signs can be custom preprinted with border, logo or floodcoated. Laser pot tags are available with preprinted care instruction and also can be customized with company logo or information.



Valueline Laser Printable Signs (VL) 10 mil laser stock

Item No.	Size	Tags per Sheet	Type of Preprint	Qty Pack/Case	Weight/Case	100	500	1000	2500	5000
WH										
VLC5070B	5 x 7	1	F	100 / 2000	27 LB	\$0.21	\$0.18	\$0.17	\$0.16	\$0.15
VLC8000B	8 x 10	1	F	100 / 1000	31 LB	\$0.43	\$0.38	\$0.35	\$0.33	\$0.30
VLC0711B	7 x 11	1	F	100 / 1000	30 LB	\$0.40	\$0.35	\$0.32	\$0.30	\$0.28
VLC1185B	8-1/2 x 11	1	F	100 / 500	18 LB	\$0.48	\$0.42	\$0.39	\$0.36	\$0.34

Setup and printing charges may apply -- See page 5 for more information or call your local reseller for quote.

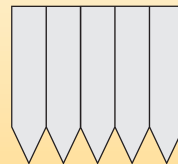


Superior Advantage Laser Printable Signs (CLS) 7 mil laser stock

Item No.	Size	Tags per Sheet	Type of Preprint	Qty Pack/Case	Weight/Case	100	500	1000	2500	5000
WH										
CLC5070B	5 x 7	1	F	100 / 2000	30 LB	0.36	0.32	0.29	0.27	0.25
CLC0711B	7 x 11	1	F	100 / 1000	33 LB	0.70	0.62	0.57	0.53	0.49
CLC8000B	8 x 10	1	F	100 / 1000	33 LB	0.79	0.70	0.64	0.60	0.55
CLC1185B	8-1/2 x 11	1	F	100 / 500	17 LB	0.90	0.79	0.73	0.68	0.63

Setup and printing charges may apply -- See page 5 for more information or call your local reseller for quote.

CLS1780SWH • CLS1780SWHP



Superior Advantage Laser Printable Pot Tags Pot Tag Laser Material (CLS) 7 mil

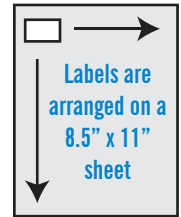
Item No.	Size	Tags per Sheet	Type of Preprint	Qty Pack/Case	Weight/Case	1M	5M	10M	20M	50M
WH										
CLS1780SWH	1-3/4 x 8"	6	F	1M / 5M	32 LB	\$114.48	\$97.42	\$91.40	\$85.84	\$80.28
CLS1780SWHP*	1-3/4 x 8"	6	F	1M / 5M	32 LB	\$134.50	\$114.46	\$107.39	\$100.86	\$94.32

*Pre-printed with generic care instructions

Setup and printing charges may apply -- See page 5 for more information or call your local reseller for quote.

Laser Printable Pressure Sensitive Labels

This high quality material is top coated to provide superior imaging in most desktop color laser printers. It allows the user to print monochrome and color with one product. The adhesive is aggressive and will adhere to most nursery containers. May be printed with decorative frames, borders, logos, etc. Variable information can be printed with the laser printer. TAGGIT PRO™ Label Software program now supports laser printers.



Color Laser Pressure Sensitive Labels

Item No.	Size	Labels per Sheet	Type of Preprint	Qty Pack/Case	Weight/Case	1M	5M	10M	20M	
<small>WH</small> CLPS1112SWH	1-13/16 x 1-1/8	36	F	1M / 20M	27 LB	\$28.00	\$23.52	\$20.72	\$17.64	
CLPS1020SWH	2 x 1	40	F	1M / 20M	27 LB	\$24.99	\$20.99	\$18.49	\$15.74	
CLPS1025SWH	2 1/2 x 1	24	F	1M / 15M	29 LB	\$30.35	\$25.49	\$22.46	\$19.12	
CLPS1225SWH	2-1/2 x 1-1/4	24	F	1M / 15M	28 LB	\$30.35	\$25.49	\$22.46	\$19.12	
CLPS1726SWH	2-21/32 x 1-11/16	18	F	1M / 10M	25 LB	\$55.95	\$47.00	\$41.40	\$35.25	
CLPS2537SWH	3-5/8 x 2-7/16	8	F	1M / 5M	26 LB	\$124.08	\$104.23	\$91.82	\$78.17	
CLPS3040SWH	4 x 3	6	F	1M / 5M	33 LB	\$122.71	\$103.08	\$90.81	\$77.31	

Item No.	Size	Labels per Sheet	Type of Preprint	Qty Pack/Case	Weight/Case	1C	5C	10C	25C	
CLPS5070SWH	7 x 5	2	F	1C / 10C	22 LB	\$41.26	\$37.55	\$31.77	\$29.29	

Item No.	Size	Labels per Sheet	Type of Preprint	Qty Pack/Case	Weight/Case	250	500	1000	2500	
CLPS1185SWH	8-1/2 x 11	1	F	250EA / 500EA	20 LB	\$0.60	\$0.50	\$0.44	\$0.38	

Due to the number of laser printers on the market, customers are requested to order a free sample packet to thoroughly test the printer they are considering using.